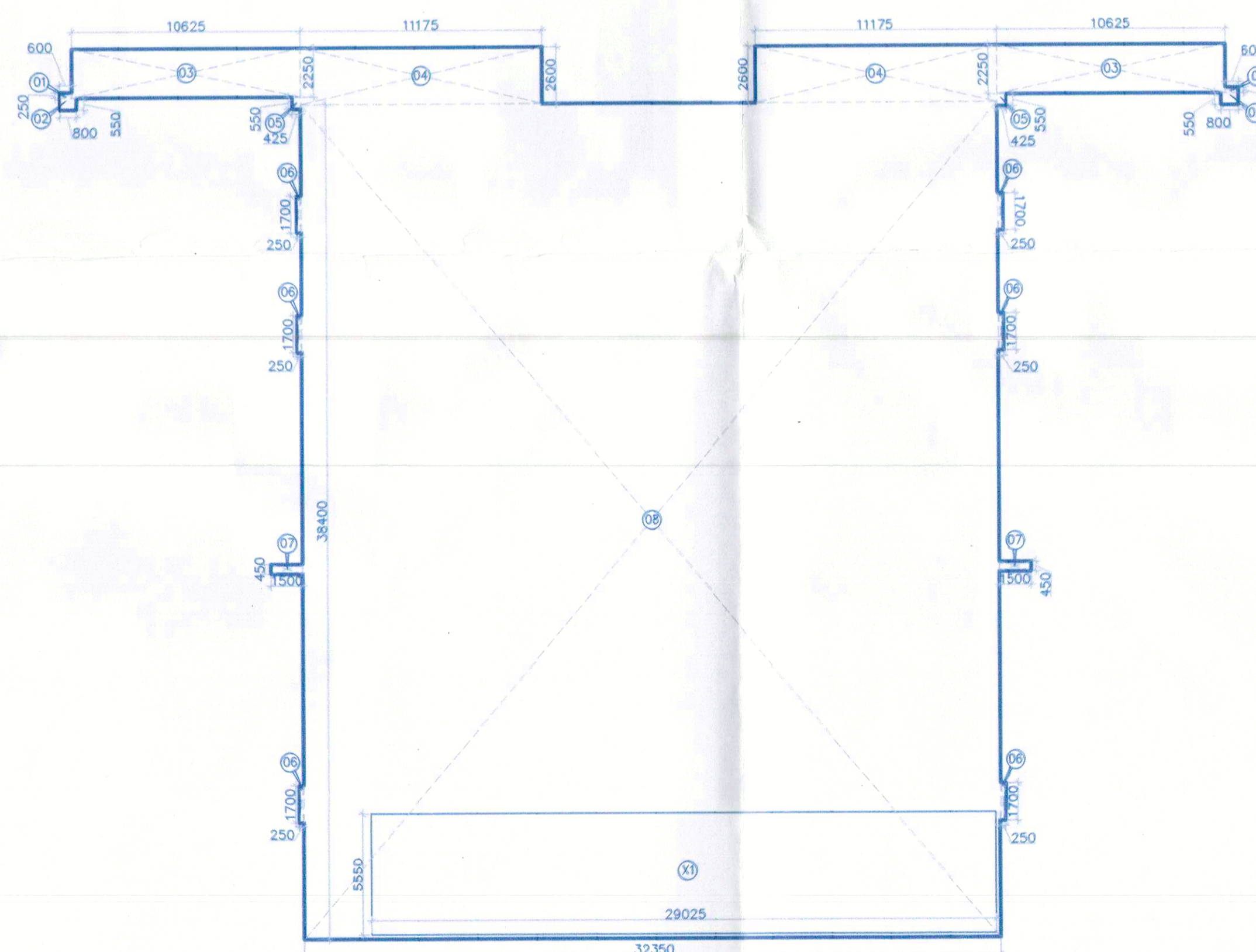


GROUND COVERAGE BUILDING=3

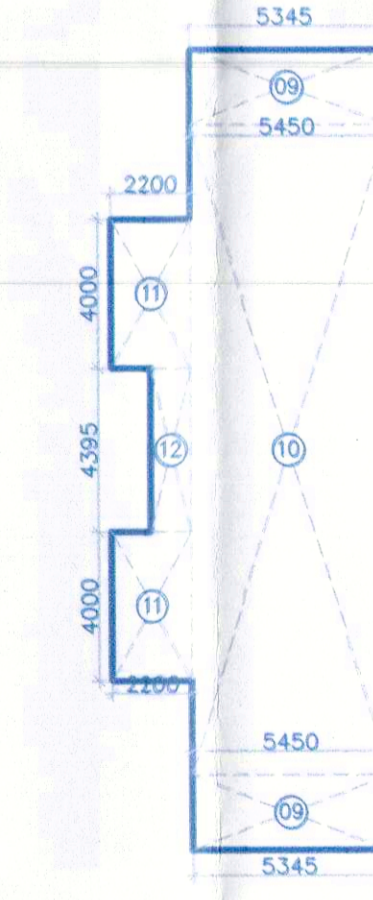
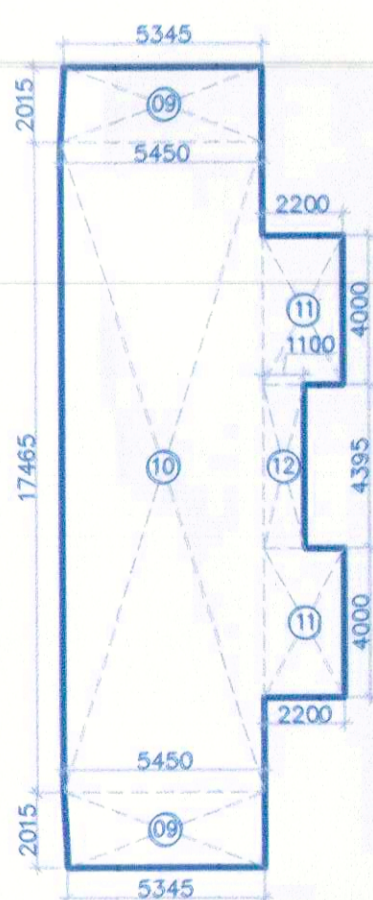
GROUND COVERAGE - (BUILDING - 3)							
GROSS - A							
gr1	1	X	105.870	X	35.950	=	3806.027 SQM
gr2	1	X	3.665	X	2.395	=	8.778 SQM
gr3	1	X	1.950	X	32.595	=	63.560 SQM
gr4	0.5	X	100.590+100.350	X	13.400	X 1 =	1346.298 SQM
gr5	0.5	X	100.095+98.500	X	16.750	X 1 =	1663.233 SQM
TOTAL						=	6887.896 SQM
TOTAL GROUND COVERAGE (BUILDING - 3)							
			= GROSS - A		+	GROSS - B	
			= 6887.896		+	267.833	
			= 7155.729				SQM

ARCH AREA		GROUND COVERAGE - (BUILDING - 3)																						
gr6	=	1	X	3.14	X	280.505	X	280.505	X	3.70	X	380	-	0.5	X	280.505	-	0.135	X	18.830	=	1.430	SQM	SQM
gr7	=	1	X	3.14	X	301.475	X	301.475	X	18.81	X	380	-	0.5	X	301.475	-	4.050	X	98.500	=	206.394	SQM	SQM
TOTAL = 267.833 SQM SQM																								



UPPER GROUND FLOOR BUILDING=2 & 3

UPPER GROUND FLOOR AREA CALCULATION - (BUILDING - 3)												
SECTION A	1	X	0.800	X	0.250	=	0.200	SQM				
	2	X	0.800	X	0.800	=	0.640	SQM				
	3	X	24.420	X	2.200	=	53.724	SQM				
	4	X	11.170	X	2.200	=	24.574	SQM				
	5	X	14.00	X	0.500	=	7.000	SQM				
	6	X	2.250	X	1.100	=	2.475	SQM				
	7	X	1.800	X	0.500	=	0.900	SQM				
	8	X	31.300	X	38.400	=	1201.920	SQM				
	9	X	5.200+4.000	X	2.000	X 2 =	41.200	SQM				
	10	X	1.400	X	17.400	=	24.360	SQM				
	11	X	2.200	X	4.000	=	8.800	SQM				
	12	X	1.100	X	4.000	=	4.400	SQM				
TOTAL								= 1832.481 SQM				
GROSS - B												
3'	1	X	29.220	X	3.500	=	102.270	SQM				
TOTAL								= 102.270 SQM				
TOTAL FAR AREA OF UPPER GROUND FLOOR (BUILDING - 3)								= 1934.751 SQM				
GROSS - A								= 6887.896 SQM				
GROSS - B								= 102.270 SQM				
TOTAL FAR AREA OF UPPER GROUND FLOOR (BUILDING - 3)								= 7090.166 SQM				
LOWER GROUND FLOOR AREA FOR PARKING												
GROSS - A								= 1782.000 SQM				
GROSS - B								= 664.394 SQM				
TOTAL								= 2446.394 SQM				



NEHA CHATURVEDI

This is a "PROVISIONAL APPROVED BUILDING PLAN" only for purpose of inviting objection from the general public.



**RISIMS ARCHITECTS PVT. LTD.**  
 69,Nora Niwas Bhawani Kunj  
 (Behind D2), Vasant Kunj,  
 New Delhi-110070.  
 Tel.: 011-26898616,26898617  
 www.rsms-arch.com

Project:  
 PROPOSED SUBMISSION OF UNDER TRANSIT ORIENTED DEVELOPMENT(TOD)POLICY FOR COMMERCIAL SITE MEASURING 32.36 ACRES FALLING IN RESIDENTIAL PLOTTED COLONY NAMEDLY DLF CITY,PHASE-I, II & III IN SECTOR-24, 25 & 25A GURUGRAM-MANESAR URBAN COMPLEX BEING DEVELOPED BY DLF LIMITED.

OWNER: **DLF CITY CENTRE LTD.**  
 (THE SHOPPING MALL COMPLEX ARJUN MARG, DLF CITY,PHASE-I, GURGAON - 122002, HARYANA.)

DRAWING TITLE: - AREA CALCULATION OF UPPER GROUND FLOOR & GROUND COVERAGE (BUILDING-03)

REVISION	JOB NO:-	DRG NO. B3-08	NORTH: N
SCALE:- 1:200	DATE:- 22-08-2019	APPROVED BY:-	
FILE:-	DEALT BY:-	CHECKED BY:-	APPROVED BY:-

ARCHITECT'S SEAL & SIGNATURE

OWNER'S SEAL & SIGNATURE